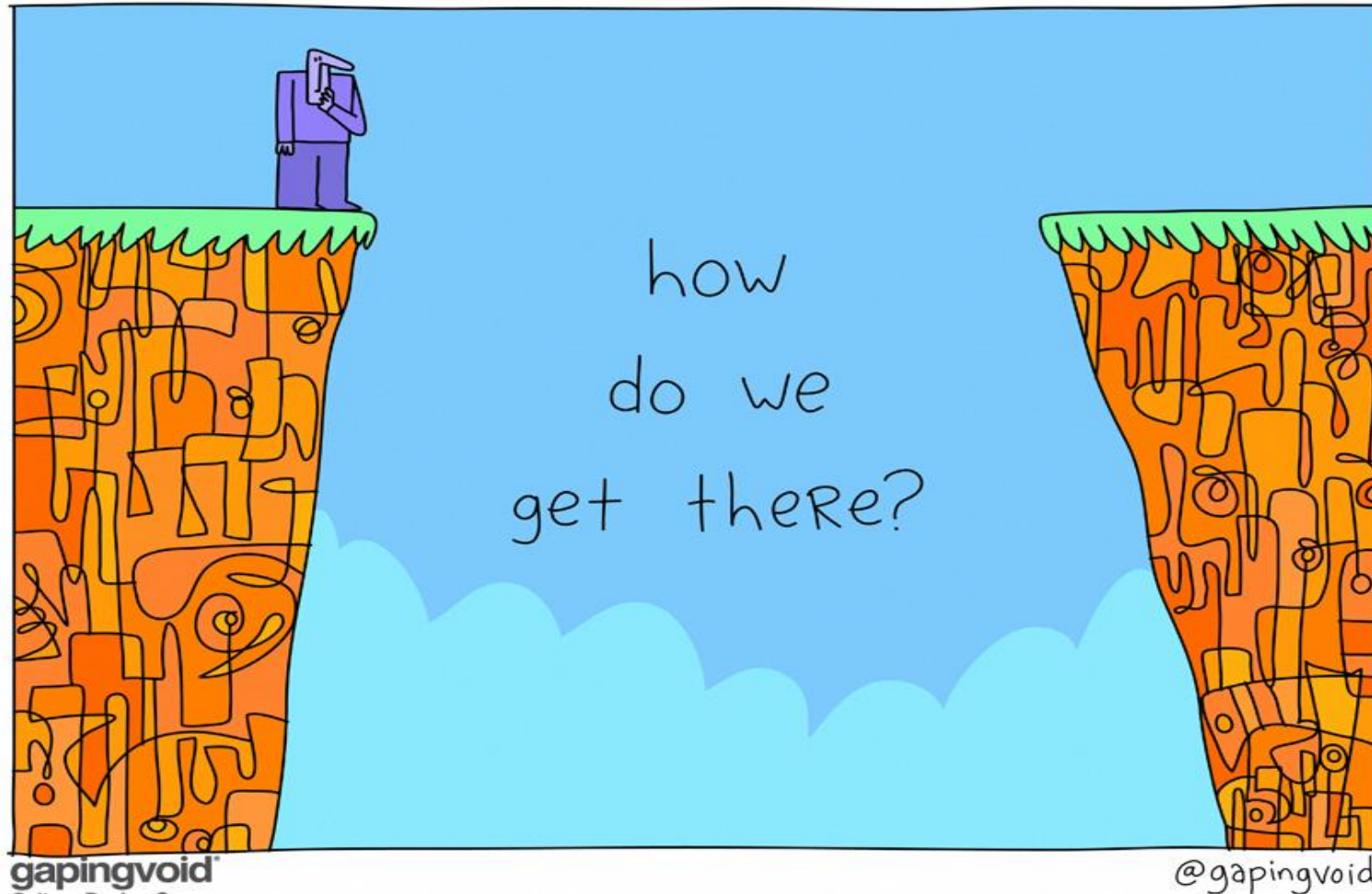


# **Early Learning and the Covid-19 Crisis**

Webinar by CCSSO and NIEER  
Thursday, April 2, 2020



# How to Bridge Early Learning at the Times of the Covid-19 Crisis



# Context of the Covid-19 Crisis

- ⌘ Schools in all states are closed
- ⌘ Child care in all states is closed or optional. In several states there are new policies to provide access for essential workers in pre-approved child care programs
- ⌘ CCSSO has created an FAQ which covers the following topics:
  - School Closures
  - Assessments
  - Accountability
  - Subgroups
  - School Meals
  - After School Programs
  - Teacher Contracts, Pay, And Student Teacher Training Counseling
  - Early Learning
  - Digital Learning Considerations
  - Federal Funding Considerations
- ⌘ Link: <https://ccsso.org/coronavirus>

# Resources and Tools for Remote Learning

- ⌘ CCSSO developed a [resource document](#) on remote learning
- ⌘ Overview by Erica King

# National Resources to Keep Up to Date

- ⌘ **Alliance for Early Success**, Coronavirus-  
<http://www.earlysuccess.org/resources/coronavirus>
- ⌘ **Early Childhood Technical Assistance Center**- Coronavirus Disease (COVID-19)- <https://ectacenter.org/>
- ⌘ **Education Commission of the States**, COVID-19 Update: State Policy Responses and Other Executive Actions to the Coronavirus in Public Schools. <https://www.ecs.org/covid-19-update/>
- ⌘ **National Association for the Education of Young Children**, COVID-19 resources and policy statements. <https://www.naeyc.org/>
- ⌘ **National Council of State Legislatures**-  
<https://www.ncsl.org/research/health/state-action-on-coronavirus-covid-19.aspx>

# State Scan of Policy Guidance for PreK- Grade 3

## ⌘ Selected Examples:

- ⌘ AR Dept of Ed expects learning to continue through **Alternate Methods of Instruction** (AMI) including PreK-Grade 3. Partnered with PBS to offer programming by grade level.
- ⌘ DE, DC, FL (like KS) asking districts to develop **continuous learning plans**. DC developed written packets distributed to parents.
- ⌘ NC Office of Early Learning- Updated weekly, resources to support **remote learning** aligned to standards, infants to grade 2.

# Partnering with NIEER

- ⌘ Thinking Long(er) Term Once the Immediate Crisis is Addressed
- ⌘ BIG QUESTION: What Opportunities Do State EC Leaders have to re-define/re-design teaching and learning for children preschool to grade 3?
- ⌘ Principles to Approach Guidance for Districts and Program Leaders-
  - How can stimulus funds, and state and local resources, rebuild the system in a way that mitigates impact of another pandemic or crisis?
    - Do no harm, to programs, communities, families, early childhood mixed delivery system
    - Do not leave anyone out, due to access to resources or other equity issues
  
  - What other questions or principles do you/your state have?

# State Guidance



⌘ **Amanda Peterson**, Director,  
Early Childhood, [Kansas  
Department of Education](#)

- [Kansas Continuous Learning 2020](#)
- [Kansas COVID-19 Resource Center](#)