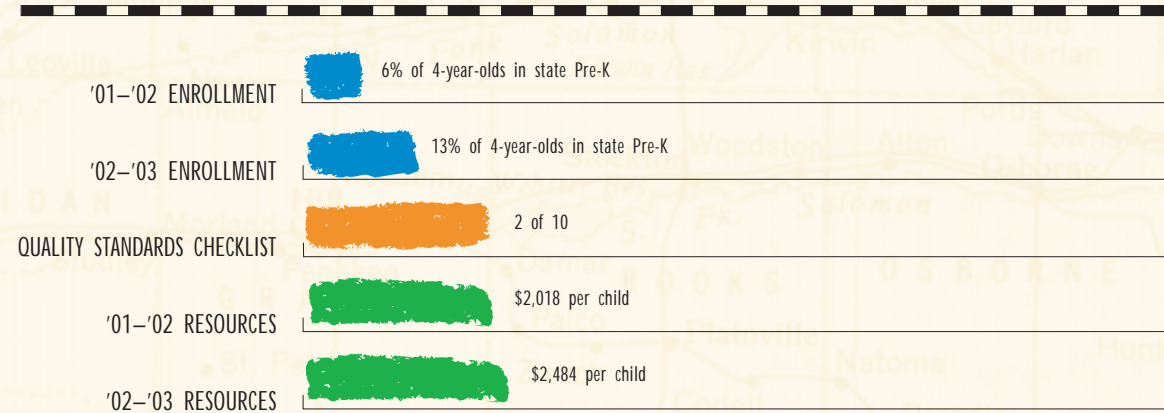


# Kansas



The At-Risk Four-Year-Old Children Preschool Program began in 1998 to serve the children not being served by Head Start, or those who are at risk but are not eligible for Head Start. Four-year-olds with the following risk factors are given priority for enrollment: free lunch eligibility, developmental delay, single or teen parents, status as an English Language Learner, or referral from another agency. Programs are operated only by public schools, which receive \$1,800 per student from the state and additional funds for children with certain risk factors.

Programs may provide comprehensive services, including nutrition and transportation services, and are evaluated annually using the Work Sampling System. The state also provides the Parents as Teachers Program (PAT) for families with children 0 to 3 years of age.

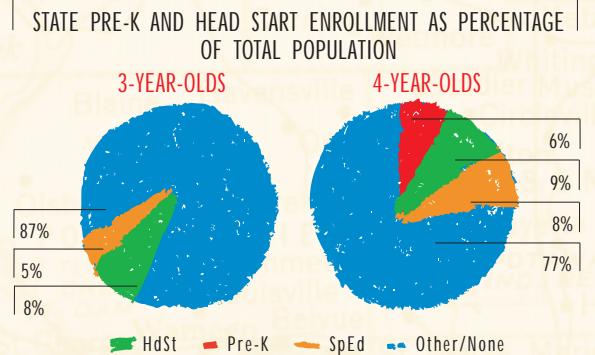
Kansas places a strong emphasis on collaboration between programs. All agencies that serve young children share resources and space, and agencies have worked cooperatively to develop Quality Program Standards, Readiness Standards, Core Competencies for staff, and Early Childhood Standards.

The At-Risk Four-Year-Old Children Preschool Program grew significantly in 2002–2003, serving 5,132 children. Total funding rose to \$12,747,900, approximately a third of which came from tobacco settlement funds.



## ACCESS

Total state program enrollment	2,230
School districts that offer state program	27%
Income requirement	None
Hours of operation	Half-day, full-week
Operating schedule	Academic year
Special education enrollment	4,936
Federally-funded Head Start enrollment	6,489
State-funded Head Start enrollment	0



## QUALITY STANDARDS CHECKLIST

POLICY	STATE PRE-K REQUIREMENT	BENCHMARK	DOES REQUIREMENT MEET BENCHMARK?
Curriculum standards	None	Comprehensive	<input type="checkbox"/>
Teacher degree requirement	BA	BA	<input checked="" type="checkbox"/>
Teacher specialized training requirement	4-year elementary teaching certificate	Specializing in EC	<input type="checkbox"/>
Assistant teacher degree requirement	2-year degree	CDA or equivalent	<input checked="" type="checkbox"/>
Teacher in-service requirement	None <sup>1</sup>	At least 15 hours/year	<input type="checkbox"/>
Maximum class size		20 or lower	<input type="checkbox"/>
3-year-olds	NA		
4-year-olds	No limit <sup>2</sup>		
Staff-child ratio		1:10 or better	<input type="checkbox"/>
3-year-olds	NA		
4-year-olds	No limit <sup>3</sup>		
Screening/referral requirements	None <sup>4</sup>	Vision, hearing, and health	<input type="checkbox"/>
Family support service requirements	None	At least 1 service	<input type="checkbox"/>
Meal requirements	Snack only <sup>4</sup>	At least 1/day	<input type="checkbox"/>

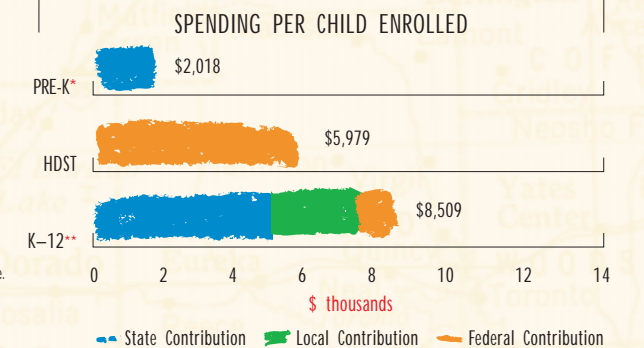
TOTAL:

**2**

of 10

## RESOURCES

Total state Pre-K spending	\$4,500,000 <sup>5</sup>
Local match required?	No <sup>6</sup>
State spending per child enrolled	\$2,018
State spending per 3-year-old	\$0
State spending per 4-year-old	\$118



\* Pre-K programs may receive additional funds from federal or local sources that are not included in this figure.  
 \*\* K-12 expenditures include capital spending as well as current operating expenditures.

Data are for the '01-'02 school year, unless otherwise noted.

<sup>1</sup> A 2-day workshop on Work Sampling is offered, but not required.  
<sup>2</sup> NAEYC standards are recommended, and programs are monitored for class size appropriateness.  
<sup>3</sup> At least 2 adults (including 1 certified teacher) are required per classroom.  
<sup>4</sup> Schools write competitive grants to obtain funds for the program and must explain how they will address health, transportation, nutrition services and transition to kindergarten.  
<sup>5</sup> In 2001–2002, the program was supported exclusively with tobacco funds. During the 2002–2003 school year, the state contributed \$8,247,900 in general revenue funds and the contribution of tobacco funds remained constant.  
<sup>6</sup> There is no local match requirement, but programs likely benefit from federal (school lunch) and local (transportation) funds.