

Rhode Island

NO PROGRAM

Rhode Island does not have a standard state prekindergarten initiative that fits the definition used in this report. However, the state does support prekindergarten through several initiatives that aim to build on existing programs and resources.

The Early Childhood Investment Fund provides school districts with resources for a variety of purposes, including prekindergarten, before- and after-school care, extended-day kindergarten, class size reduction in elementary school, and parent education and family support programs. Districts determine how to use the funds, and in 2002–2003, six districts reported using a portion of these funds, in coordination with other resources, to finance preschool programs. These programs give priority to serving children with disabilities, children from disadvantaged backgrounds, and/or those whose first language is not English.

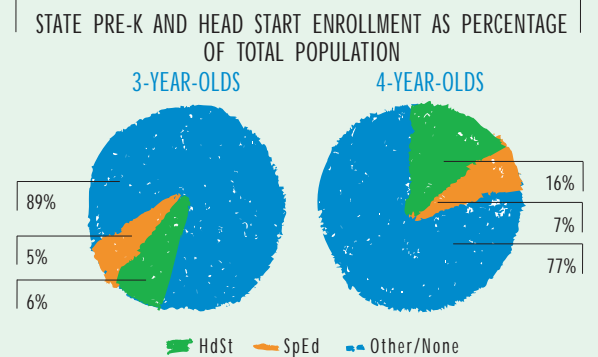
The state does not have specific standards for this particular initiative, but it does have standards that apply to all early childhood programs and meet most of the 10 benchmarks on NIEER's quality checklist. For example, the state requires head teachers to have bachelor's degrees with early childhood certification and staff-child ratios to be 1:9 for 3-year-olds and 1:10 for 4-year-olds.

A separate initiative, supported with CCDF quality funds, serves children ages 3 and 4 from low-income families. Rhode Island's Comprehensive Child Care Services Program (CCCSP) aims to promote high-quality, comprehensive early education services—modeled on Head Start—in community-based centers and family child care homes. There are 1,100 children receiving full-day, full-year services and 60 children receiving part-day, full-year services.



ACCESS

Total state program enrollment	0
School districts that offer state program	NA
Income requirement	NA
Hours of operation	NA
Operating schedule	NA
Special education enrollment	1,580
Federally funded Head Start enrollment	2,389
State-funded Head Start enrollment	339 ¹

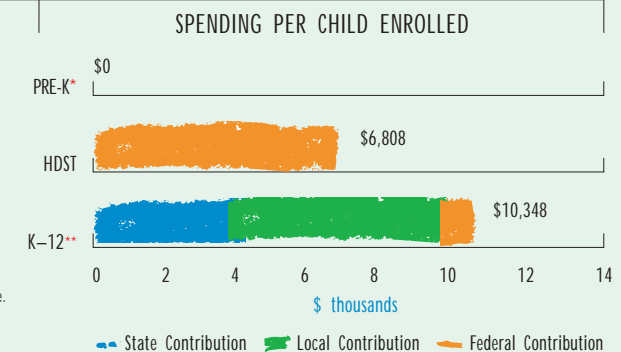


QUALITY STANDARDS CHECKLIST



RESOURCES

Total state Pre-K spending	\$0
Local match required?	NA
State spending per child enrolled	\$0
State Head Start spending	\$1,800,000
State spending per 3-year-old	\$0
State spending per 4-year-old	\$0



^{*} Pre-K programs may receive additional funds from federal or local sources that are not included in this figure.
^{**} K-12 expenditures include capital spending as well as current operating expenditures.
 Data are for the '02-'03 school year, unless otherwise noted.

¹ Rhode Island was not able to break its state-funded Head Start enrollment down by single year of age. As a result, this figure is an estimate based on the percentage of federal Head Start enrollees in Rhode Island who were 3 or 4 years old.